

NEWSLETTER

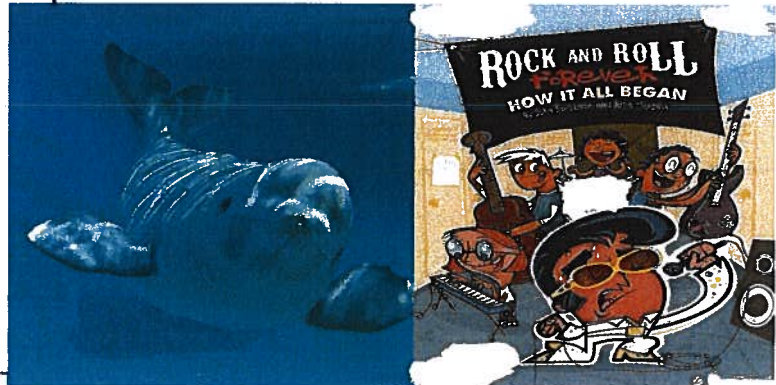
FRANKLIN PHONETIC PRIMARY SCHOOL

franklinphonetic.com



April 27, 2018

End of Year Music Concert
May 08, 2018 @1:00 - 7:00 pm



FRANKLIN FRIENDS

SCHOOL CALENDAR

- ⇒ May 07, 2018 - 5-6th Grade Grand Canyon field trip
- ⇒ May 8, 2018 - K-6 End of year music concert 1:00 pm & 7:00 pm
- ⇒ May 15, 2018 - 4th - 6th grade Band Choir and Opera concert 1:00 pm & 7:00 pm
- ⇒ May 25, 2018 -3-6 grade field day at Palma park- Early release @ 12:30 pm
- ⇒ May 28, 2018 - No School Memorial Day
- ⇒ May 29, 2018 - K-2 Field Day
- ⇒ May 29-30, 2018 - Early Release Days @ 12:30 pm
- ⇒ May 30, 2018 - Award assembly
- ⇒ May 30, 2018 - Last Day of School early release @ 12:30

Grand Canyon Field Trip May 07,2018- Leaving school @ 6:00 am arriving back @ 6:00 pm.

After-Care Program

Franklin School is DES Certified. Please come into the office if you have questions or need an application.

After-Care hours are 2:45 pm to 5:30 pm Monday through Friday. Fees are due weekly on Mondays. For (weekly payers) the cost is \$30 per week, which equals \$120 per month. If you would like to save some money and can pay by the month, the cost is \$100, due at the beginning of each month. (Since most months have at least four weeks, this is a huge savings.) There is a discount for multiple children in the same family attending our after-care school program; an amount of \$10.00 per child per week will be deducted from the cost of multiple children attending this program.

After care ends at 5:30 pm; please be considerate of the employees watching your children and pick up your children no later than 5:30 pm.

speech screenings

Do you have concerns about your child's speech skills or ability to understand or express themselves? If so, please contact the office so we can arrange for a free speech screening.

Now enrolling for Preschool and Kindergarten!
Please pick up packet in the office or call (602) 870-6674.



Homework will be issued every day except Fridays and Holidays.

Unfortunately, children don't always bring home their homework. We would like to encourage you to practice math facts, write spelling words, and do other academic assignments at home. If students do not return their homework, teachers will provide assignments that students will complete during recess time.

School Lunch

Hot Lunch



If your child is not on free or reduced lunch you need to pay \$14.25 per week, \$57.75 per month, or \$2.85 per day. School lunch fees are due and payable the first day of the week, month, or daily, depending on how you are paying. A child whose account becomes \$5.00 deficient will be provided cheese and crackers for lunch until the account has a positive balance. Note - - a voice call will be made to the number provided at the time of enrollment regarding a negative balance. Please make sure we have a current phone number on file. If your child has any food allergies, please make sure we are aware of this in writing at the front office.



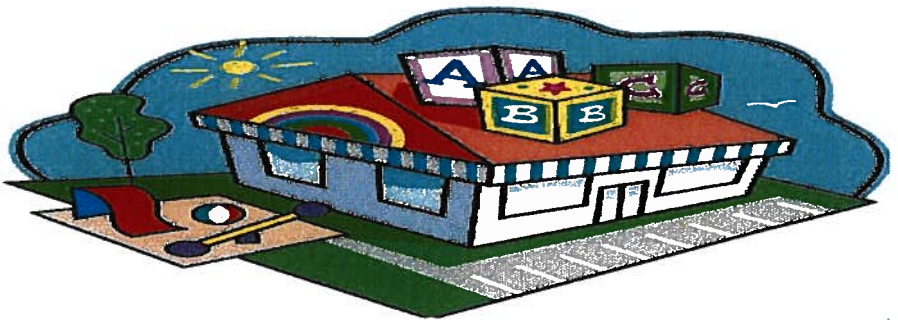
If you buy anything from Amazon.com, you can go to smile.amazon.com and sign up to have 5% of what you buy be donated to Franklin Phonetic Primary School! Please look up Franklin Phonetic Primary School Inc in the charities listed, and choose us to be your charity.



Parents, Franklin PreSchool is now enrolling. Child must be four years old by September 01, 2018 and qualify financially. Pick up packet in the office. For the month of April 2018, children's lesson is on recycling how to reduce, re-use. This lesson is important for our environment. Pre-K breakfast now being served in class. Children must arrive by 8:15 am to receive breakfast.



Welcome to
Preschool



Drop Off / Pick Up Information

- ⇒ Please drop off your children between 7:45 and 8:15 am at the Cafeteria. Breakfast is served during this half-hour.
- ⇒ After 8:15 am, all arriving students need to check in at the office, located off of Hatcher Road at the East end of the church.
- ⇒ The 2:45 pm and 3:30 pm dismissals will be in front of the preschool by the driveway. You will need to enter our parking lot on 2nd Street and follow the parking lot around the church. We will release your children to you as you get to the preschool building and we see the color-coded card inside your front windshield.
- ⇒ Please do not line up before 2:40 pm as we do not want to block local street traffic.
- ⇒ Please do not come to the office to pick up your children within 15 minutes of the scheduled pickup time to get your child(ren).
- ⇒ After 3:45 pm, you will need to pick up your children at the aftercare door, which is opposite the Cafeteria door off the West parking lot.
- ⇒ **PLEASE remember that aftercare ends at 5:30 pm.** Unless special arrangements have been made, the employees watching your children need to go home to their own families at that time. You can call the school at 602-870-6674 to reach the aftercare teachers after 4:00 pm.

Spalding Education International has a phonogram app! You can download a free trial of the app through the Google Play Store or through itunes.apple.com

The app is only \$3.99 if you want to buy it.



Brief resumes of our awesome staff are available to view in the office.

Possible Summer camp! If interested call the school office @ (602) 870-6674.

Art Shirts



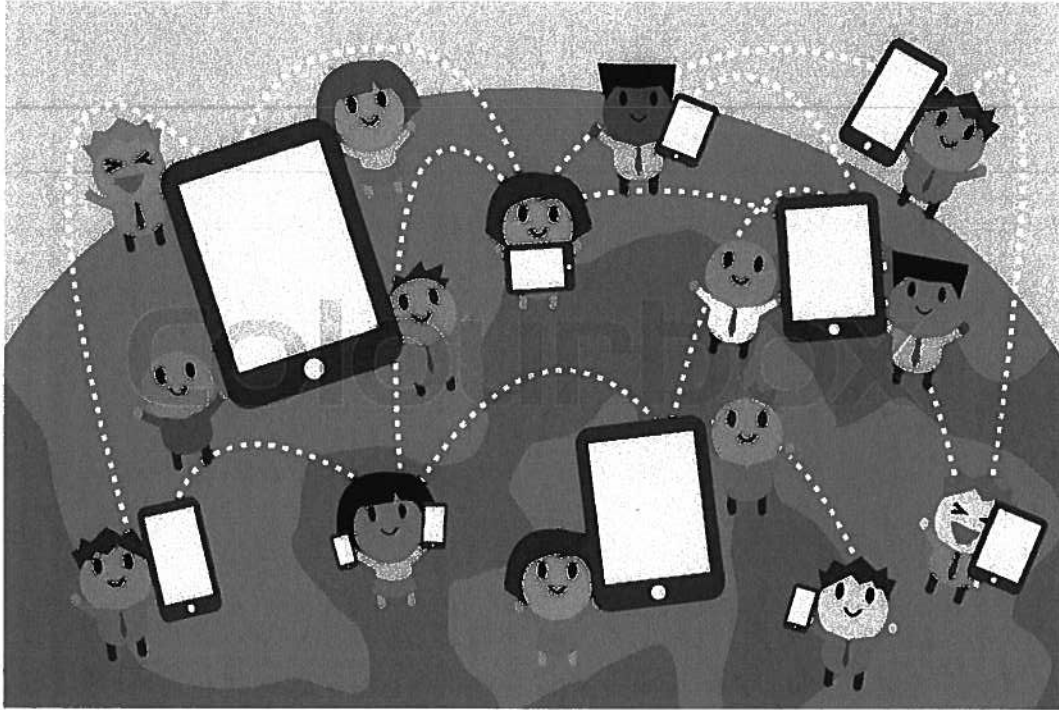
Art Shirts are needed to use with painting, paper mache' projects and other potentially messy projects in art. If you have not already done so, please send a large shirt with your child that can be put over their clothes to protect them. *Please put your child's name on the shirt.* We will keep the shirts in the art room and use them when we do messy projects.



Flu and allergy season is here.

Classrooms are always in need of more Kleenex and antibacterial wipes, donations are always appreciated.

**Please Check Out Our Website at:
www.franklinphoneticschoolsunnyslope.com**

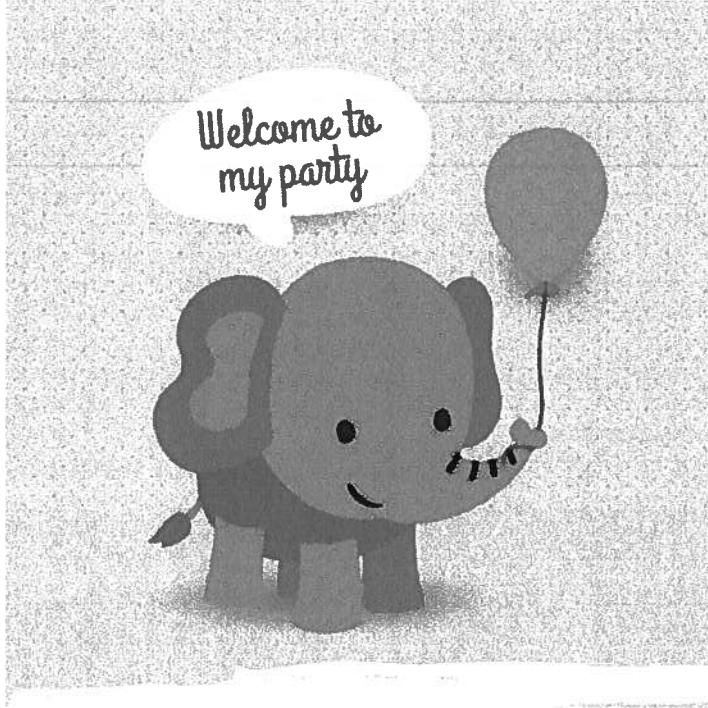


Attention: Franklin Phonetic Primary School Parents, We need pictures for this School year's yearbook.

We need pictures from field trips, party pictures, or basketball/football team pictures. Please email them to oddjester@hotmail.com. Please put first initial of your first name and last name so that you can receive credit for your pictures in the yearbook. Franklin Staff appreciates your cooperation.

Thank you,

Franklin Staff



Dear Parents,

Friendly reminder regarding party invitations. If or when your child is passing out any party invitations at School, please follow School Policy in your student handbook. Children can pass out invitations **ONLY** if there is one for every child in the class. Invitations must have enough for all the Girls or all the Boys. Franklin School thanks you for your cooperation.

Franklin Staff

Student Practice Sites

Gr: K - 6

Math Facts addition/Subtraction/multiplication/division- flashcards

[http://www.harcourtschool.com/activity/thats a fact/english K 3.html](http://www.harcourtschool.com/activity/thats_a_fact/english_K_3.html)

IXL

Variety of Math skills - 20 free questions a day or you can subscribe for a monthly fee

<https://www.ixl.com/math/>

Khan Academy

Math Instruction/Practice

<https://www.khanacademy.org>

Gr 1-6

More than 425 math games, logic puzzles, and brain workouts for students to practice their math skills.

<https://www.mathplayground.com>