

**NEWSLETTER
FRANKLIN PHONETIC
PRIMARY SCHOOL
franklinphonetic.com**



November 02, 2018

FRANKLIN FRIENDS

SCHOOL CALENDAR

- ⇒ November 12 - No School -Veteran's Day
- ⇒ November 19 - Grammar Play
- ⇒ November 20, Early release - **NO AFTERCARE AVAILABLE**
- ⇒ November 21,22,23 - No School- Thanksgiving break
- ⇒ December 18, Christmas Concert - 7:00 pm
- ⇒ December 21, Early release - **NO AFTERCARE AVAILABLE**
- ⇒ December 24 -31- No School - Winter break
- ⇒ January 1- 4 - No School - Winter break
- ⇒ January 16 - Report Cards
- ⇒ January 21- No School - MLK Day
- ⇒ January 22 -100th Day
- ⇒ February 18 - No School - President's Day
- ⇒ March 08, Early release - **NO AFTERCARE AVAILABLE**
- ⇒ March 11-15 - No School - Spring Break
- ⇒ March 27,28,29 - Special conferences - Early release days - **NO AFTERCARE AVAILABLE**
- ⇒ April 19- No School - Spring Recess
- ⇒ May 20,21- Early release @ 12:30pm - **NO AFTERCARE AVAILABLE**
- ⇒ May 22 - Last Day of School – Early release @12:30 - **NO AFTERCARE AVAILABLE**

Parents check out our Special Education Policies and Procedures now available on our Website or Office.

COME JOIN US!

**Monday, November 19,
@ 7:00 pm for our
Grammar Play!**

After-Care Program

Franklin School is DES Certified. Please come into the office if you have questions or need an application.

After-Care hours are from 2:45 pm to 5:30 pm Monday through Friday. Fees are due on Mondays.

Daily fees \$10.00

Weekly fees \$30

Monthly fees \$100

Or save more money and pay \$100.00 per month. There is a discount for multiple children in the same family attending our after-care school program; an amount of \$10.00 per child per week will be deducted from the cost of multiple children attending this program.

Aftercare ends at 5:30 pm; please be considerate of the employees watching your children and pick up your children on time @5:30 pm.

speech screenings

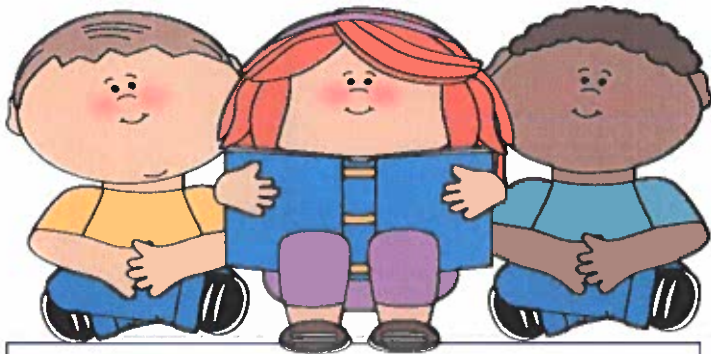
Do you have concerns about your child's speech skills or ability to understand or express themselves? If so, please contact the office so we can arrange for a free speech screening.

Happiness is...

a good report card!



Parents if you did not attend Parent/ Teacher conferences, please sign and return the envelope and keep your student(s) report card.



Homework will be issued every day except Fridays and Holidays.

Unfortunately, children don't always bring home their homework.

We would like to encourage you to practice math facts, write spelling words, and do other academic assignments at home.

School Lunch



If your child is not on free or reduced lunch you need to pay \$14.75 per week, \$59.00 per month, or \$2.95 per day. School lunch fees are due and payable the first day of the week, month, or daily, depending on how you are paying. A child whose account becomes \$5.00 deficient will be provided cheese and crackers for lunch until the account has a positive balance. Note - - a voice call will be made to the number provided at the time of enrollment regarding a negative balance. Please make sure we have a current phone number on file. If your child has any food allergies, please make sure we are aware of this in writing at the front office.

amazon smile
You shop. Amazon gives.

If you buy anything from Amazon.com, you can go to smile.amazon.com and sign up to have 5% of what you buy be donated to Franklin Phonetic Primary School! Please look up Franklin Phonetic Primary School Inc in the charities listed, and choose us to be your charity.



Preschool lesson plan for October is on "Trees" This lesson plan will cover different types of trees. Preschool opens @ 7:45 am. Children must arrive between 7:45 to 8:15 am to receive breakfast.



Drop Off / Pick Up Information

- ⇒ Please drop off your children between 7:45 and 8:15 am at the Cafeteria. Breakfast is served during this half-hour.
- ⇒ After 8:30 am, all arriving students need to check in at the office, located off of Hatcher Road at the East end of the church.
- ⇒ The 2:45 pm and 3:30 pm dismissals will be in front of the preschool by the driveway. You will need to enter our parking lot on 2nd Street and follow the parking lot around the church. We will release your children to you as you get to the preschool building and we see the color-coded card inside your front windshield.
- ⇒ Please do not line up before 2:40 pm as we do not want to block local street traffic.
- ⇒ Please do not come to the office to pick up your children within 15 minutes of the scheduled pickup time to get your child(ren).
- ⇒ After 3:45 pm, you will need to pick up your children at the aftercare door, which is opposite the Cafeteria door off the West parking lot.
- ⇒ PLEASE remember that aftercare ends at 5:30 pm. Unless special arrangements have been made, the employees watching your children need to go home to their own families at that time. You can call the school at 602-870-6674 to reach the aftercare teachers after 4:00 pm.

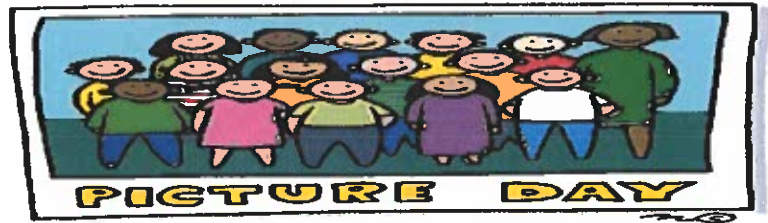
Spalding Education International has a phonogram app! You can download a free trial of the app through the Google Play Store or through itunes.apple.com

The app is only \$3.99 if you want to buy it.



Brief resumes of our awesome staff are available to view in the office.

**Picture retake on Tuesday,
November 13, 2018**



Art Shirts are needed to use with painting, paper mache' projects and other potentially messy projects in art. If you have not already done so, please send a large shirt with your child that can be put over their clothes to protect them. *Please put your child's name on the shirt.* We will keep the shirts in the art room and use them when we do messy projects.



With Fall around the corner, classrooms are always in need of more Kleenex and antibacterial wipes, donations are always appreciated.

**Please Check Out Our Website at:
www.franklinphoneticschoolsunnyslope.com**