

Week 14: Week of: November 21 - 25, 2022

## A Peek at Our Week

### History/Science/Social Studies:

Maps: "A Physical Map: California"

Maps: "A Physical Map: The Rocky Mountain Region"

Language: Reading Comprehension

### Reading:

"The Wright Brothers" packet

"Transportation Fuels Growth"

Math: Adding numbers with more than three digits; checking one digit division; subtracting numbers with more than three digits; word problems about equal groups; one-digit division with a remainder; the calendar; rounding numbers to the nearest thousand

### Writing:

"The Wright Brothers" packet

## Comments:

If I cannot read something on a class worksheet or on a test because of poor or sloppy handwriting, it will be marked wrong.

## Upcoming Events

### Thanksgiving Holiday

1/2 day November 22

No School  
November 23, 24, 25

## Homework

**Monday:** sequence, series, similarities, similarity, similar, South America, treachery, typical, type, vertical, qu, er, ie, ou, th, ea, ch, y, s, t

Math: attached paper(s)

**Tuesday:** decision, decide, principle, accommodate, accuracy, accurate, approximate, approximate, commence, commercial, commerce, ci, si, p, ur, x, m, c, eu, dge, eigh

Math: attached paper(s)

Other: Write sentences for 10 spelling words

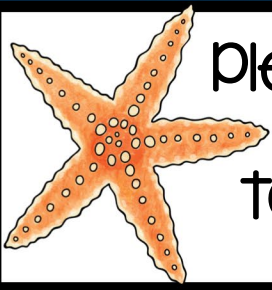
**Wednesday:** communication, communicate, conversation, complex, conclusion, construction, construct, converse, counterfeit, ti, u, wh, ck, ei, oo, j, ey, tch, eo

Math: attached paper(s)

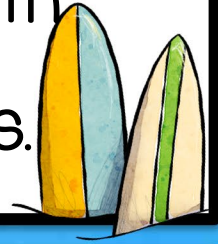
**Thursday:** Missed spelling words and phonograms.

Math: attached paper(s)

Friday: No Homework Friday



Please send your student to school with a bottle of water to keep on the floor under their desks.



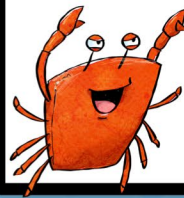
If we cannot read your student's completed homework, they will be required to rewrite it. They need to make their "l" tall (it cannot be short like an "i" and they should not have capital letters where there are none. Please make sure your student is writing neatly with spaces between words and sentences.

**splash**

There will be NO SCHOOL on Wednesday, Thursday, and Friday, November 23, 24, and 25 for Thanksgiving Break. On November 22<sup>nd</sup>, students will have early release at 1 pm.

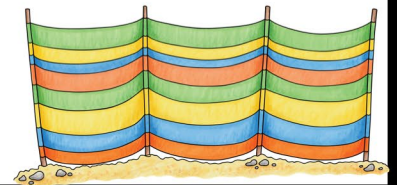
*you are awesome*

Your student needs to know basic multiplication and division facts; please help them with this at home.



You can reach me at:

[marguerite.mcpherson@fppsphoenix.net](mailto:marguerite.mcpherson@fppsphoenix.net)



Your students still need to practice addition and subtraction facts at home.

